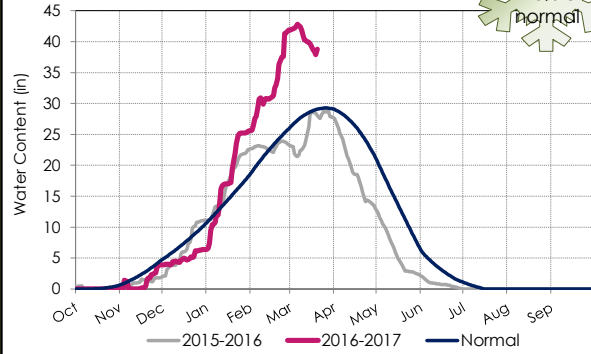


State Water Project Resources

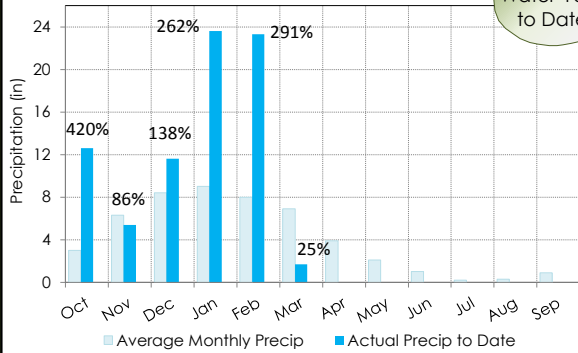
Northern Sierra Snowpack

38.8 in.
140% of normal



8 Station Index Precip

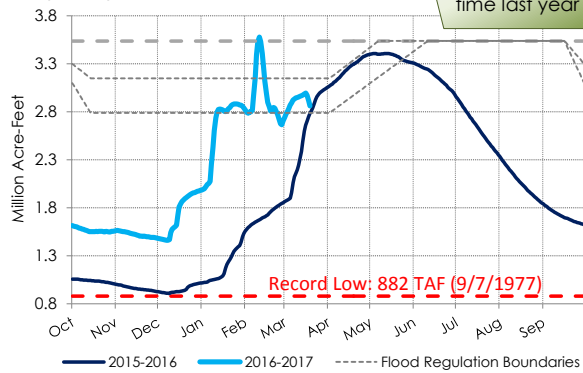
78.2 in.
Water Year to Date



Oroville Reservoir Storage

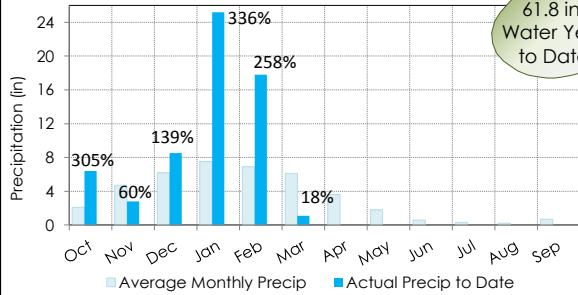
Capacity: 3.5 MAF

52 TAF more in storage than this time last year



5 Station Index Precip

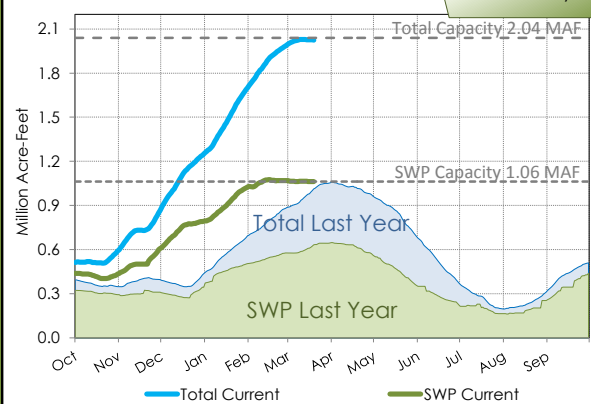
61.8 in.
Water Year to Date



San Luis Reservoir Storage

Capacity: 2.04 MAF

427 TAF more in SWP storage than this time last year

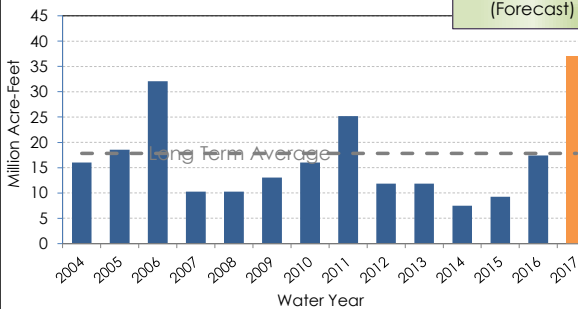


Other SWP Contract Supplies for 2017 (AF)

Transfer/Exchanges	15,000
Article 21	TBD
Pool A/B (Purchased)	TBD
Carryover Supplies	210,000

Sacramento River Runoff

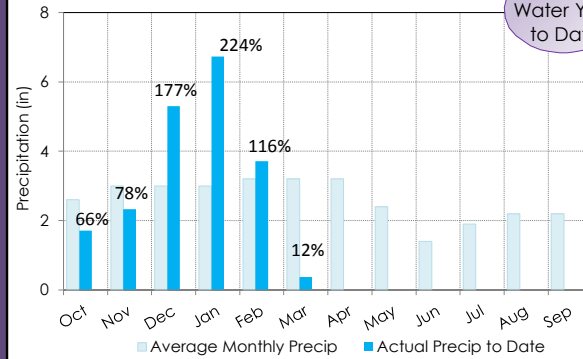
WY 2017
208% of normal (Forecast)



Colorado River Resources

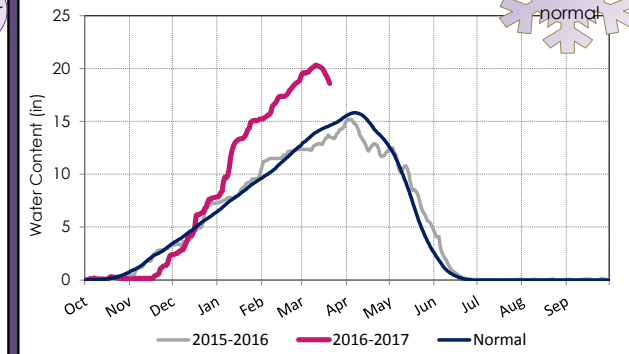
Upper Colorado Basin Precip

20.2 in.
Water Year to Date

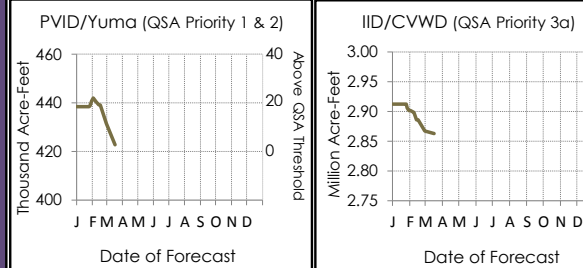


Upper Colorado Basin Snowpack

18.6 in.
128% of normal



2017 Colorado River Ag Use



Lake Powell Storage

Capacity: 24.3 MAF

83 TAF more in storage than this time last year



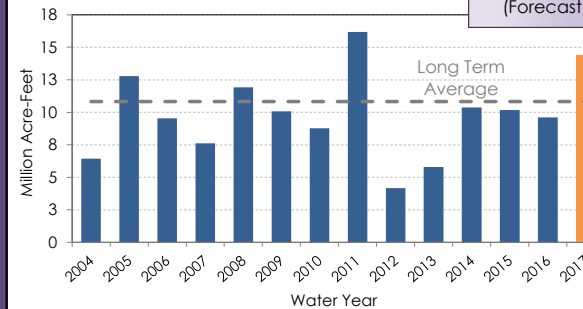
Lake Mead Shortage/Surplus Outlook

	2017	2018	2019	2020	2021
Shortage	0%	34%	30%	29%	33%
Surplus	0%	3%	7%	15%	18%

Likelihood based on results from the January 2017 USBR/Colorado River Simulation System model run

Powell Unregulated Inflow

WY 2017
129% of normal (Forecast)



Lake Mead Storage

Capacity: 26.1 MAF

562 TAF more in storage than this time last year

